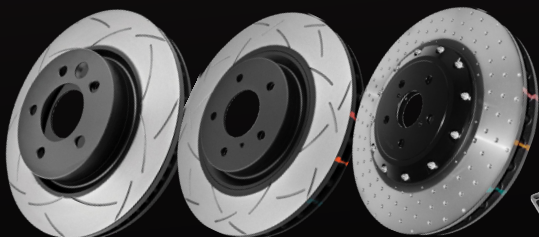




DISC BRAKES AUSTRALIA

# NEW PRODUCT UPDATE

//PRESS RELEASE  
OCTOBER 2022



STREET SERIES

4000 SERIES

5000 SERIES



STREET SERIES



STREET PERFORMANCE



XTREME PERFORMANCE



BRAKE CALIPER



BRAKE SHOES

BRAKE CYLINDER

BRAKE HOSE

FOR FURTHER INFORMATION, VISIT [DBA.COM.AU](http://DBA.COM.AU)



MEET OUR NEW FAMILY MEMBER...

# STREET

# SERIES

HYDRAULIC  
BRAKE CYLINDER



 FROM THE **#1** TRUSTED ROTOR BRAND

 THIS MONTH RELEASE INCLUDES:

- ▶ **74** NEW WHEEL CYLINDERS
- ▶ **85** NEW MASTER CYLINDERS

 OE-REPLACEMENT FOR EVERYDAY USE



### Features:

- ▶ Direct replacement, no modifications required
- ▶ Restores original quality and performance without compromise
- ▶ Manufactured in accordance with intl. quality standards to OE specifications

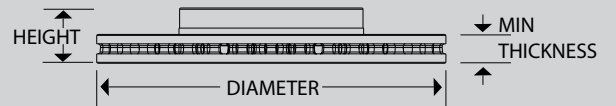
RECOMMENDED FOR USE WITH



FOR MORE INFO & APPLICATIONS REFER  
**DBA PART FINDER AT**  
**DBA.COM.AU**

**dba**  
DISC BRAKES AUSTRALIA





**AUDI S3, ARTEON  
VOLKSWAGEN GOLF R**

Part No : **DBA53927SLVS**

Barcode : **9316391478573**

Also available in: 5000 XD

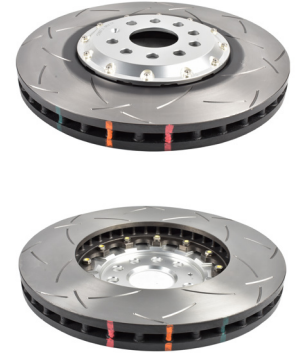


SUITABLE FOR USE WITH

Series: 8Y / 3H / CD MK8

**DESCRIPTION & DIMENSIONS (mm)**

|                   |   |
|-------------------|---|
| Surface Design    | T3  |
| Vent Design       | Vented                                    |
| Diameter          | 357                                       |
| Height            | 49.7                                      |
| Thickness         | 34  |
| Min/Max Thickness | 32  |
| Centre Hole       | 65  |
| No. Bolts         | 5   |
| Position          | Front                                     |
| Year Manufactured | 7/2021-on /<br>10/2017-on /<br>10/2021-on |



**5000SERIES**

1

**AUDI S3, ARTEON  
VOLKSWAGEN GOLF R**

Part No : **DBA53927SLVXD**

Barcode : **9316391478580**

Also available in: 5000 T3



SUITABLE FOR USE WITH

Series: 8Y / 3H / CD MK8

**DESCRIPTION & DIMENSIONS (mm)**

|                   |   |
|-------------------|---|
| Surface Design    | XD  |
| Vent Design       | Vented                                    |
| Diameter          | 357                                       |
| Height            | 49.7                                      |
| Thickness         | 34  |
| Min/Max Thickness | 32  |
| Centre Hole       | 65  |
| No. Bolts         | 5   |
| Position          | Front                                     |
| Year Manufactured | 7/2021-on /<br>10/2017-on /<br>10/2021-on |



**5000SERIES**

2

**JEEP WRANGLER**

Part No : **DBA43212**

Barcode : **9316391458872**

Also available in: T3

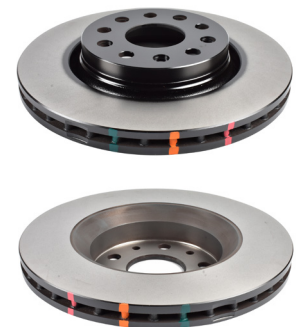


SUITABLE FOR USE WITH

Series: JL 2.2TD & 3.6L V6 Petrol V6

**DESCRIPTION & DIMENSIONS (mm)**

|                   |             |
|-------------------|-------------|
| Surface Design    | HD          |
| Vent Design       | Vented      |
| Diameter          | 330         |
| Height            | 55.7        |
| Thickness         | 28          |
| Min/Max Thickness | 26.4        |
| Centre Hole       | 72          |
| No. Bolts         | 5           |
| Position          | Front       |
| Year Manufactured | 04/2018- on |



**4000SERIES**

3